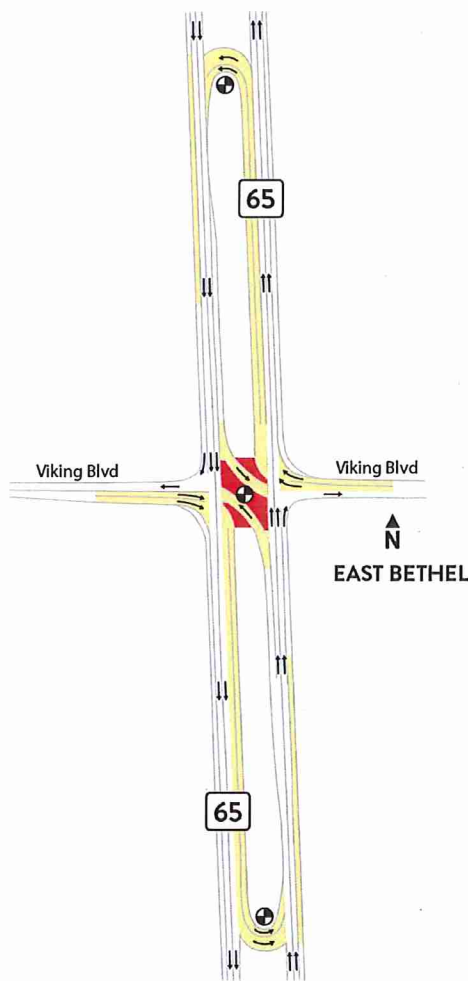


## East Bethel

### Reduced Conflict Intersection at Highway 65 and Viking Boulevard

The new signalized Reduced Conflict Intersection (RCI) at Highway 65 and Viking Boulevard is complete. Here's what you need to know to travel safely through the intersection.



- If you travel north and south on Highway 65 through the intersection, or if you turn onto Viking Boulevard, your drive won't change much.
- If you're traveling east and west on Viking, you'll experience a new traffic path. Instead of crossing Highway 65 at Viking, you'll always begin with a right turn. Trust the signals and signs to then guide you through. Each light will cycle through the familiar green-yellow-red sequence.
- When the light at the U-turn is red, you must first come to a complete stop. If there is no oncoming traffic you can then proceed with your left turn. It's legal.
- Even at intersections where you are allowed to turn on red, you aren't **required** to do so. At each of the three signals, you can wait until the light turns green to complete your turn. Never feel rushed or pressured to make a turn if you aren't fully confident that it's safe to proceed.

Thanks for your patience during construction and as you become familiar with this new and safer intersection.